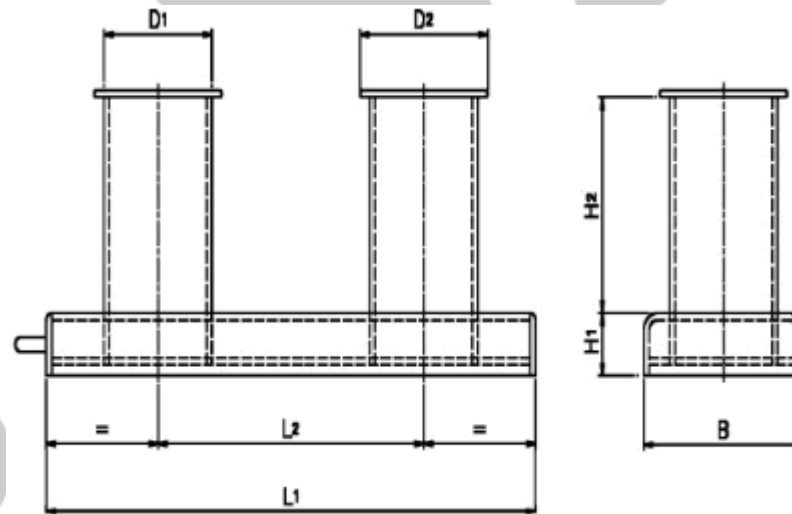
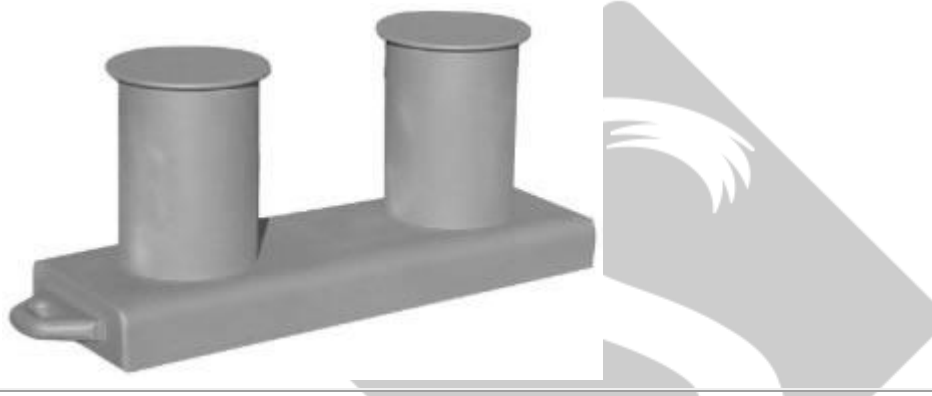


## Property of Saxton Marine

### Ships Bollards BSMA 12

Please note that dimensions and weights are nominal and small variations are reserved. E & OE



Type	f		Tube		Plate		i1	i2	h1	h2	b	d2	Weight kg
	M	T	d1	s	d1	s							
125	4.06	12	140	10	125	10	560	320	200	75	200	150	40
160	5.85	12	168	10	160	10	720	400	250	90	250	200	66
200	7.96	17	219	10	200	10	900	500	300	100	300	250	97

E: [info@saxtonmarine.co.uk](mailto:info@saxtonmarine.co.uk)

Tel: +44 (0) 1446 781092

### Property of Saxton Marine

250	13.2	30	273	10	250	10	1130	630	380	125	380	300	145
315	19.7	50	324	12.5	312	12.5	1430	800	480	150	480	400	309
400	33.5	100	406	20	400	20	1800	1000	600	175	600	480	735
500	55.4	130	508	20	500	20	2250	1250	750	200	750	600	1148
630	82.8	160	610	20	630	20	2830	1570	940	225	940	730	1673

- Maximum permissible load in bollard **f** tonnes
- when mooring **M** tonnes
- when towing **T** tonnes

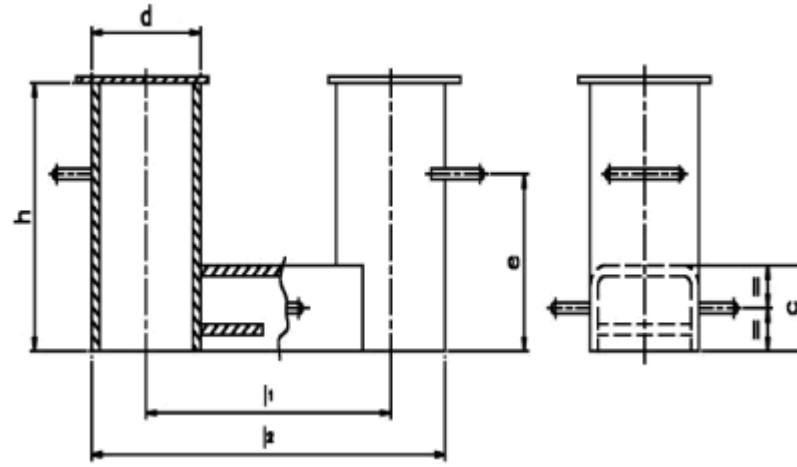
#### Ships Bollards NS2584

Please note that dimensions and weights are nominal and small variations are reserved. E & OE



Saxton  
M A R I N E

## Property of Saxton Marine



Type	f M	T	d	c	e	h	i1	i2	Weight kg
125	4.5	13.2	140	80	165	250	315	455	26
160	5.6	15.8	168	90	195	300	400	568	37
200	10.2	29	219	100	250	400	500	719	75
250	13.2	37.2	273	125	315	500	630	903	124
315	20.9	55	324	150	375	600	800	1124	230
400	28.5	75.4	406	175	435	700	1000	1406	356
500	52	123.4	508	200	515	830	1250	1758	723
630	62.7	158.1	610	225	615	1000	1570	2180	1084
710	83.1	219.3	711	250	675	1100	1750	2461	1532

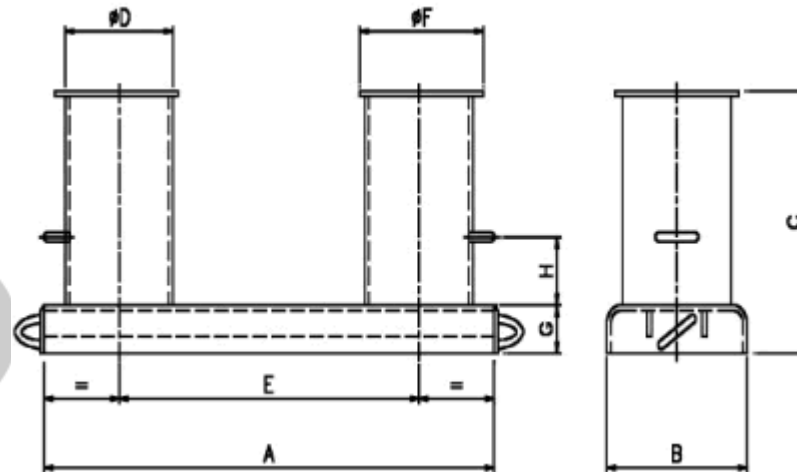
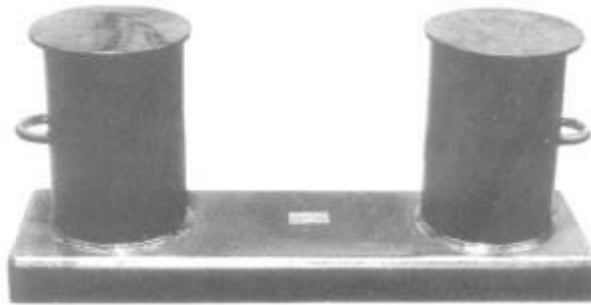
- Maximum permissible load in bollard f tonnes
- when mooring M tonnes
- when towing T tonnes
- The bollard can be loaded with two mooring ropes each with a breaking strength not exceeding th values in the table

## Property of Saxton Marine

- The bollard can be loaded with one towing rope laid in a single sling over one of the bits and with a breaking strength not exceeding the values in the table

### Ships Bollards VIS 1

Please note that dimensions and weights are nominal and small variations are reserved. E & OE



Type	Part Number	f	Weight (kgs)	A	B	C	D	E	F	G	H
100	A3.072	5.0	35	600	210	310	114	350	145	100	65

E: [info@saxtonmarine.co.uk](mailto:info@saxtonmarine.co.uk)

Tel: +44 (0) 1446 781092

### Property of Saxton Marine

150	A3.073	10.0	59	800	260	385	168	500	205	100	90
200	A3.074	15.5	98	950	330	460	219	600	255	100	115
230	A3.075	17.0	113	1030	350	470	244	680	300	100	120
250	A3.076	20.0	135	1150	370	520	273	750	320	110	130
300	A3.077	28.0	210	1350	420	597	324	900	370	110	155
350	A3.078	32.0	328	1500	470	657	356	1000	405	110	175
400	A3.080	40.0	418	1650	540	740	406	1100	450	125	200
450	A3.081	54.0	499	1800	600	790	457	1200	510	125	215
500	A3.082	60.0	586	1950	650	840	508	1300	560	125	230
550	A3.083	68.0	684	2100	700	890	559	1400	610	125	250
600	A3.084	80.0	900	2270	770	945	612	1500	660	125	270

- Suitable for wire or rope with a breaking strain of 'f' tonnes when cross belayed on the bollard
- Type 100 and 150 have centre rib only


  
**Saxton**
  
**M A R I N E**