

Product Guide 2020



Keeping the tide on your side



Quality Chain

Fast delivery.

**Available in sizes from
12mm to 102mm diameter.**

**Can also be supplied with
all fittings, links, swivels, etc.**

Contact us with any technical enquiries.

View our extensive stock at www.saxtonmarine.co.uk

Secure your vessels and mooring with quality chain.



Stud Link Chain

Galvanised chain from 12.5mm to 26mm, and black painted chain from 12.5mm to 117mm.

All chain can be supplied with all major class IACS Society test certificates.

In stock and ready to ship worldwide.



Mooring Chain

Fast delivery. Available in sizes from 12mm to 102mm diameter.

Can also be supplied with all fittings, links, swivels, etc.

Contact us with any technical enquiries.



Second Hand Chain

We have available a large quantity of second-hand chain cable suitable for a range of purposes including mooring.

Call Saxton Marine today for stock information and the best technical advice available.

Chain Chart

Know your cable for a joined up purchasing process.

Characteristic	Stud Link Chain	Open Link Chain
Strength	Strong with Support Stud	Standard
Typical Usage	Merchant Fleet	Moorings
Standard Lengths	27.5m	25m
Certification	Class Test Cert	Certified
Quality	U2 & U3	U2 & U3
Joining Link	Kenter Shackle	D-Forelock Shackle
Common Usage	Coupling to Anchor	Sinkers
Swivels	Yes (Jaw, etc)	Yes
Bitumen Coating	Yes	Yes
Galvanized Coating	Yes	Yes
Test Cert Stamp	Yes	Yes

Call Saxton Marine today for stock information and the best technical advice available.

Stud Link Chain

Purchasing Tips



Quantity

How many lengths of chain do you require?

You can check the readings report from the dockyard to determine how many lengths of chain you require. (27.5m lengths are standard.)



Chain Size

What diameter of chain do you need?



Grade of Steel

You can determine the grade of steel you require for your order from the previous Test Certificate. The Test Certificate will show the approved classification society from Lloyds Register and other class societies to be either grade U2 or U3



Accessories

Do you need to add Shackles and swivel forerunners to your order?

If so, what type of swivel is required?



Timescales

Placing your order well in advance of the deadline does open up the possibility of your product being sent by the most cost-effective mode of transportation. Alternatively, an early order will still reduce costs by road or air.

Call Saxton Marine today for stock information and the best technical advice available.



Drop Anchor not business

Fast delivery on Anchors and Chain Cable.

Our quality products and worldwide network mean wherever you are in the world, we can deliver what you need, when you need it.

View our extensive stock at www.saxtonmarine.co.uk

The link between you and your marine supplies



AC14

AC14 High Holding Power (HHP) anchors are stockless anchors with a 25% reduction in weight when compared to other conventional stockless anchors.

The AC-14 HHP anchor weight range is between 70kg to 25000kg.

AC14 anchors can normally be supplied with test certification from the major classification societies.



Danforth

The Danforth anchor is an offshore anchor and can also be used for lighter craft, usually in mud or silty conditions.

The Danforth HHP anchor weight range is between 50kg to 20,000kg and can be supplied with test certificates from all the major classification societies. Supplied new or secondhand.



Halls

A Hall's anchor is a stockless bow anchor type. One of the most popular anchors designed to fit most ships.

Can be supplied with all certification from all major classification societies.



SAX TW

SAX TW anchors are High Holding Power anchors with large flat flukes and are a stockless anchor type. The SAX TW anchor has its main edges are honed for digging and are supplied with crown-plates to prevent it digging in too deeply.

Can be supplied with all certification from all major classification societies.

Call Saxton Marine today for stock information and the best technical advice available.

Shackles and Links



Saxton Marine carries an extensive range of shackles, links, swivels and equipment for ships, tugs, ports, docks, marinas, fish farms and other moorings.

Available for fast worldwide delivery.

Contact us with any technical enquiries.

View our extensive stock at www.saxtonmarine.co.uk

Everything you need and more...



Kenter Shackles

The Kenter joining shackle is used to join two stud link chain elements ending in a common link. It is made of Heavy Duty forged steel (U2- U3 grade).



Forelock Shackles

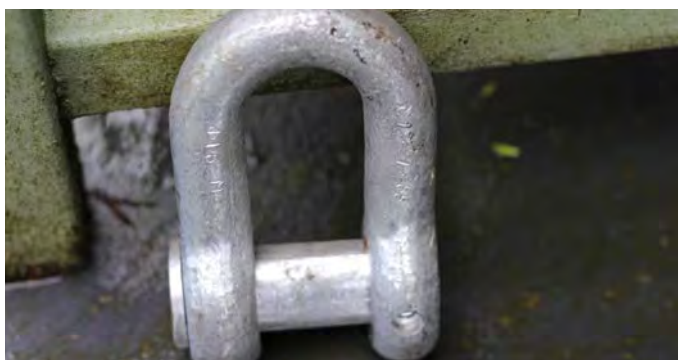
Forelock Shackles connect mooring chain to sinkers and open link chain to chain.



Swivels

The Swivel is usually fitted between the anchor and the chain cable to prevent the chain cable from twisting and kinking.

An anchor shackle with a joining shackle (DT 105) or a Kenter link are needed to complete the assembly.



D Shackles

A universally useful marine shackle available in a range of sizes.

D shackles are commonly used for attaching anchors and chains.

Available in U2 or U3 quality.

Available in Galvanised /Black Bitumen

Call Saxton Marine today for stock information and the best technical advice available.

Get Decked Out...



**...with our extensive range
of Deck equipment**

**Available in various dimensions and
an extensive range of specifications
to match your requirements.**

Contact us with any technical enquiries.

View our extensive stock at www.saxtonmarine.co.uk

Get Decked Out with our range of Deck equipment



Double Bollards

The bollard can be loaded with one towing rope laid in a single sling over one of the bits and with a breaking strength not exceeding the values in the table.

NS2584 bollards, BSMA 12 bollards & VIS 1 bollards supplied.



Deck Mounted Chocks

We carry an extensive range of mooring chocks with certification as per your requirements.

Panama bows deck mounting or Bullwark fitting.
Panama Chocks for Panama Canal regulations.



Multi Angle Fairleads

Our ships pedestal and multi angle fairleads are available in a large range with many combinations of vertical and horizontal rollers. The standard designs are easily adapted to meet your required specifications.

Highest quality construction for long life on ships deck.

Supplied primed ready for installation.

All supplied with Certificate: ABS,BV.DNV.LR,CCS, as per your requirements

Call Saxton Marine today for stock information and the best technical advice available.

Secure your stock

An aerial photograph showing several fishing boats and aquaculture pens in a coastal area. The boats are blue and white, and the pens are circular structures in the water. The water is blue, and the sky is clear.

**Quality chain available for
fast worldwide delivery
Stud Link, Open Link and
second hand chain available
in sizes from 19 to 102mm diameter**

Contact us with any technical enquiries

View our extensive stock at www.saxtonmarine.co.uk

Purchasing Checklist

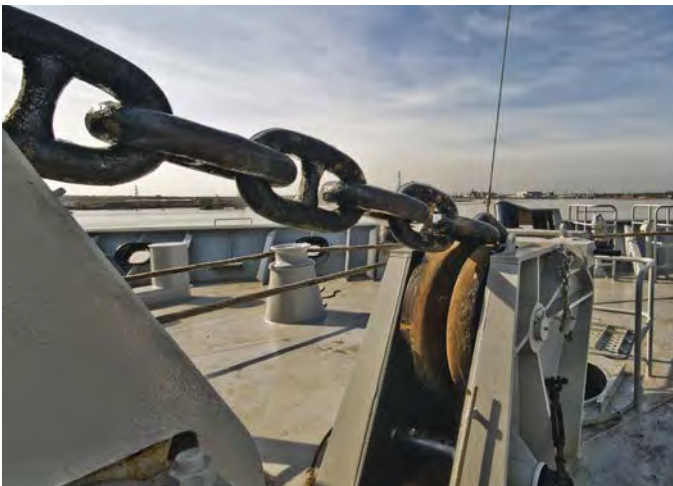
We have competitively priced, quality equipment in stock and ready for fast, World-Wide Shipping.

For friendly, expert advice, please contact us for a chat.



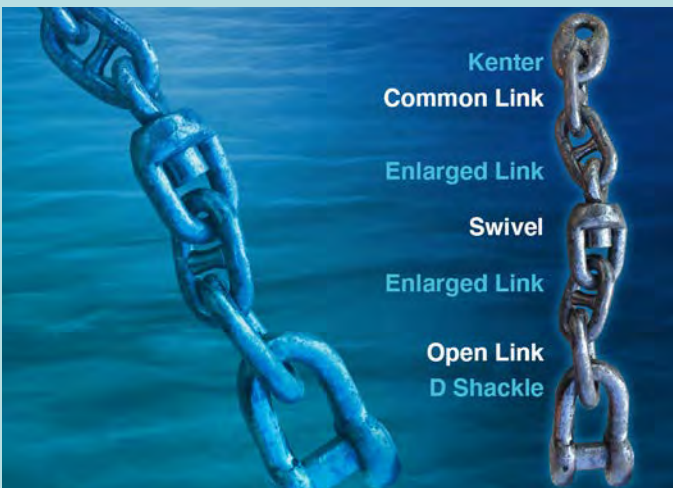
Anchor checklist

- ◆ What Anchor has your ship been designated to take? (Common types - AC14. Halls. Spek. SAX TW.)
- ◆ What Certification is required? (Lloyds? DNV? IACS?)
- ◆ Where do you need the Anchor?
- ◆ How would you like it transported?
- ◆ When do you need it?
- ◆ Do you need chain cable? (See below)



Chains

- ◆ What diameter chain do you require?
- ◆ What grade of chain do you require? (U2 or U3)
- ◆ What classification society? (Lloyds, DNV, IACS)
- ◆ How many total metres of chain do you require, or how many lengths?



Shackles & Links

- ◆ How many Kenters do you need?
- ◆ What swivel type is required?
- ◆ Do you need a D Anchor Shackle?

Call Saxton Marine today for stock information and the best technical advice available.



Saxton

M A R I N E

Keeping the tide on your side

For over thirty years, Saxton Marine has been fully committed to providing the best technical support to our customers, before, during and after the sale.

Call us today for stock information and the best technical advice available.

+44 (0)1446 781092

info@saxtonmarine.co.uk

www.saxtonmarine.co.uk